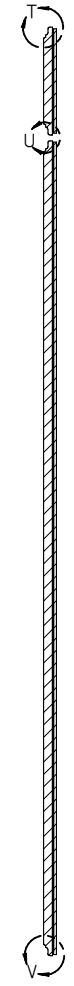
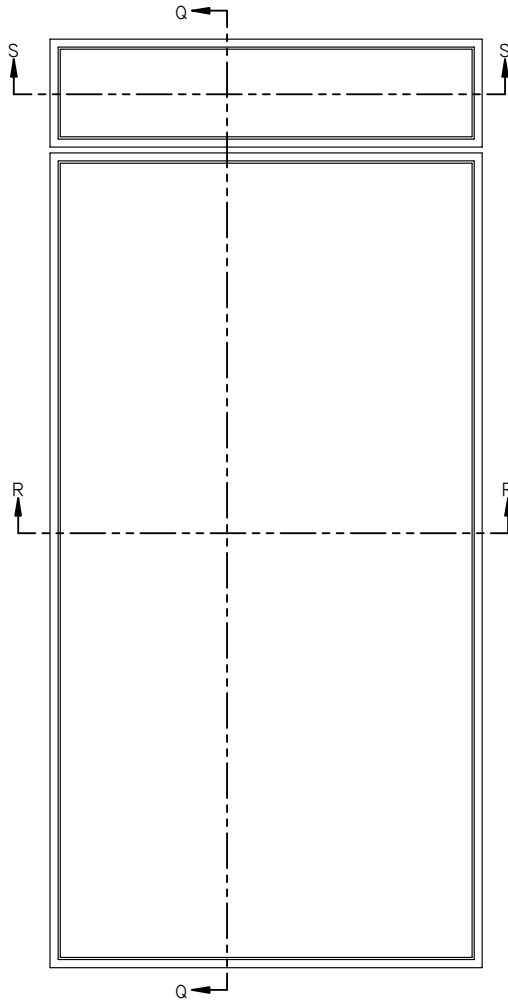




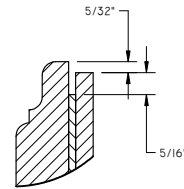
Flush Inset Panel Assembly Details

ALL REFRIGERATOR / ALL FREEZER MODELS BI-36R, BI-36RG AND BI-36F

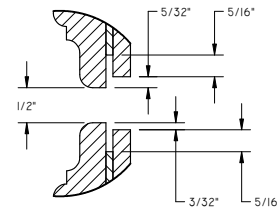
DETAILS SHOWN WITHOUT UNIT TRIM



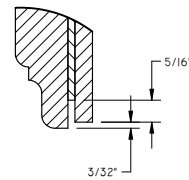
SECTION Q-Q



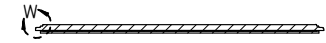
DETAIL T
(TOP EDGE OF FLUSH
INSET GRILLE PANEL)



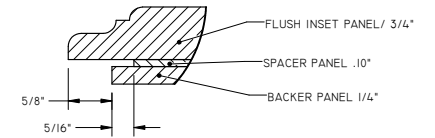
DETAIL U
(TOP EDGE OF FLUSH INSET
DOOR PANEL AND BOTTOM EDGE
OF FLUSH INSET GRILLE PANEL)



DETAIL V
(BOTTOM EDGE OF FLUSH
INSET DOOR PANEL)



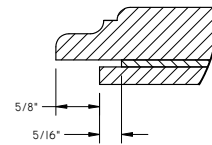
SECTION S-S
(FLUSH INSET GRILLE AND
DOOR PANELS)



DETAIL W
(BOTH SIDE EDGES OF FLUSH
INSET GRILLE PANEL)



SECTION R-R
(FLUSH INSET DOOR PANEL)



DETAIL Y
(BOTH SIDE EDGES OF
FLUSH INSET DOOR PANEL)

NOTES:

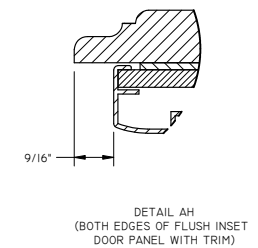
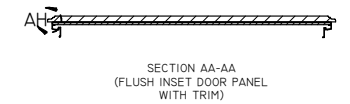
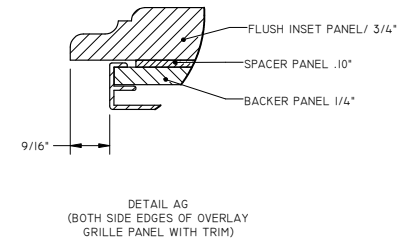
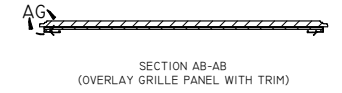
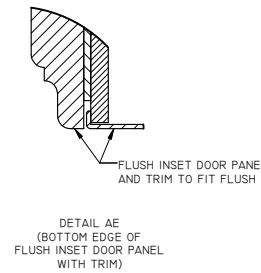
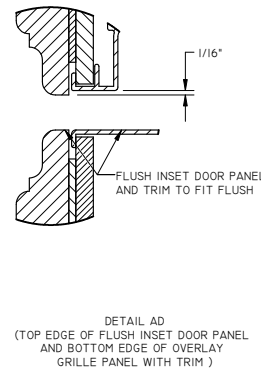
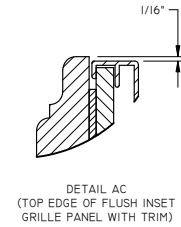
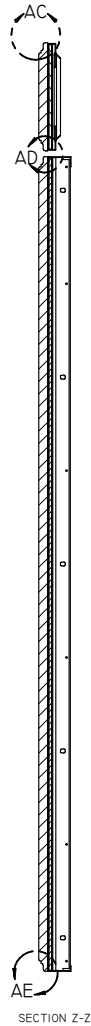
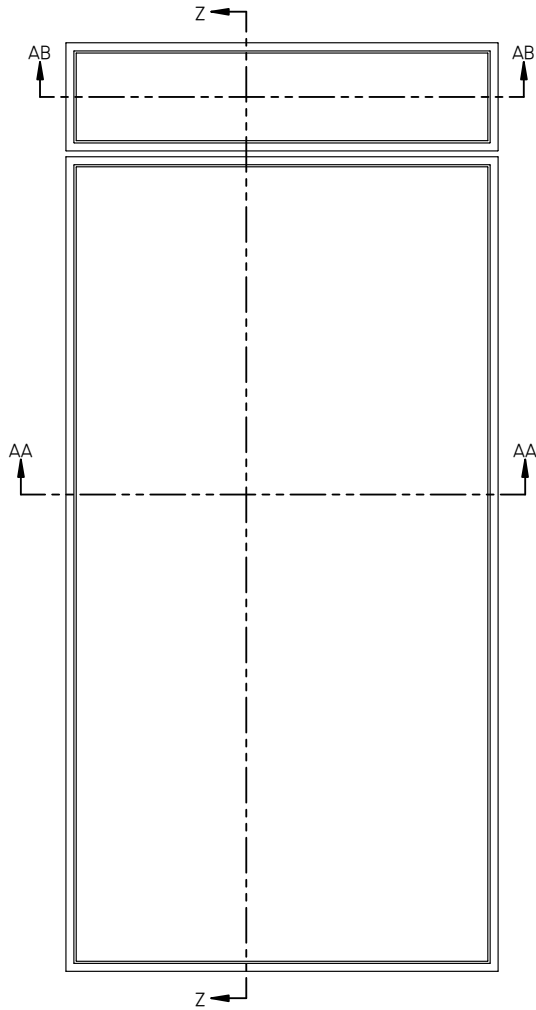
- 1) REFER TO THE BUILT-IN DESIGN GUIDE FOR INSTRUCTIONS ON FINISHING PANEL OPENING FOR GLASS DOOR.
- 2) EDGE ALIGNMENTS SHOWN ARE INTENDED TO BE USED TOGETHER WITH PANEL SIZES PROVIDED IN THE BUILT-IN DESIGN GUIDE TO RESULT IN A 1/2" PERIMETER REVEAL WITH ADJACENT CABINETRY.



Flush Inset Panel Assembly Details

ALL REFRIGERATOR / ALL FREEZER MODELS BI-36R, BI-36RG AND BI-36F

DETAILS SHOWN WITH UNIT TRIM



NOTES:

- 1) REFER TO THE BUILT-IN DESIGN GUIDE FOR INSTRUCTIONS ON FINISHING PANEL OPENING FOR GLASS DOOR.
- 2) EDGE ALIGNMENTS SHOWN ARE INTENDED TO BE USED TOGETHER WITH PANEL SIZES PROVIDED IN THE BUILT-IN DESIGN GUIDE TO RESULT IN A 1/2" PERIMETER REVEAL WITH ADJACENT CABINETRY.